

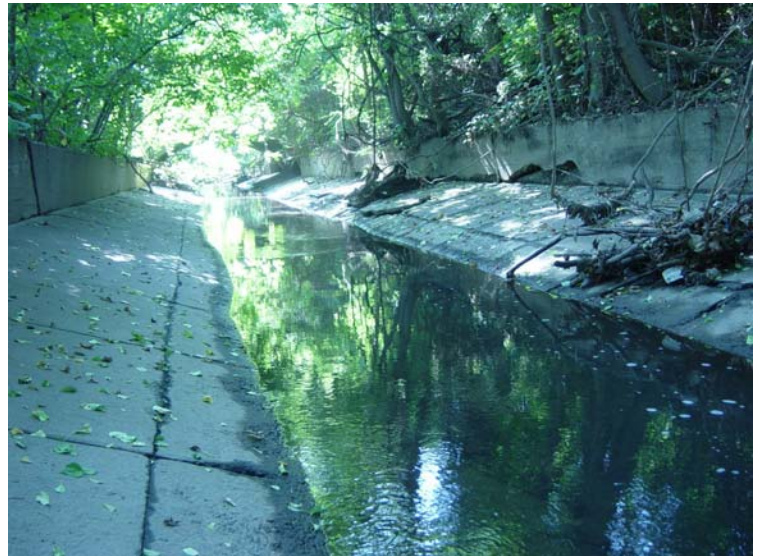
PAXTON CREEK

Description

The 27 square mile Paxton Creek watershed is located in the southwestern section of Dauphin County with headwaters on the southern slope of Blue Mountain in Susquehanna and Lower Paxton Townships. About 18 square miles of the stream, located in these townships, drains to Wildwood Lake. Upstream of the lake the watershed can be characterized as extensively developed suburban land dominated by low to medium density residential development. A small amount of the land area is in farmland with forestland confined to the slope of the Blue Mountain. Downstream of Wildwood Lake the stream flows south entering the heavily urbanized Harrisburg City. The stream channel throughout the City is confined to a concrete channel constructed to mitigate flooding. The creek joins the Susquehanna at the southern end of the city. Topography in the majority of the watershed is generally flat to gently sloping. The geology of the watershed is mostly shale, silt and sandstone.

DEP Classification

Paxton Creek is classified as a Warm Water Fishery (WWF). A substantial section of Paxton Creek and two tributaries are listed as impaired by siltation and nutrients. The source of the impairments is identified as from urban runoff and storm sewers.



Paxton Creek before entering the Susquehanna River.

QUICK FACTS

Watershed Size: 27 mi² in
Dauphin County

Land Uses: Primarily Urban/Suburban,
Residential

Stream Miles: 50.4

Impaired Stream Miles: 19.3

DEP Stream Classification:

- WWF

DEP Listed Impairments:

- Sedimentation from Urban runoff, agriculture, and storm sewers

Watershed Municipalities:

Lower Paxton Twp, Middle Paxton Twp,
Harrisburg City, Penbrook Borough,
Susquehanna Twp



Paxton Creek watershed